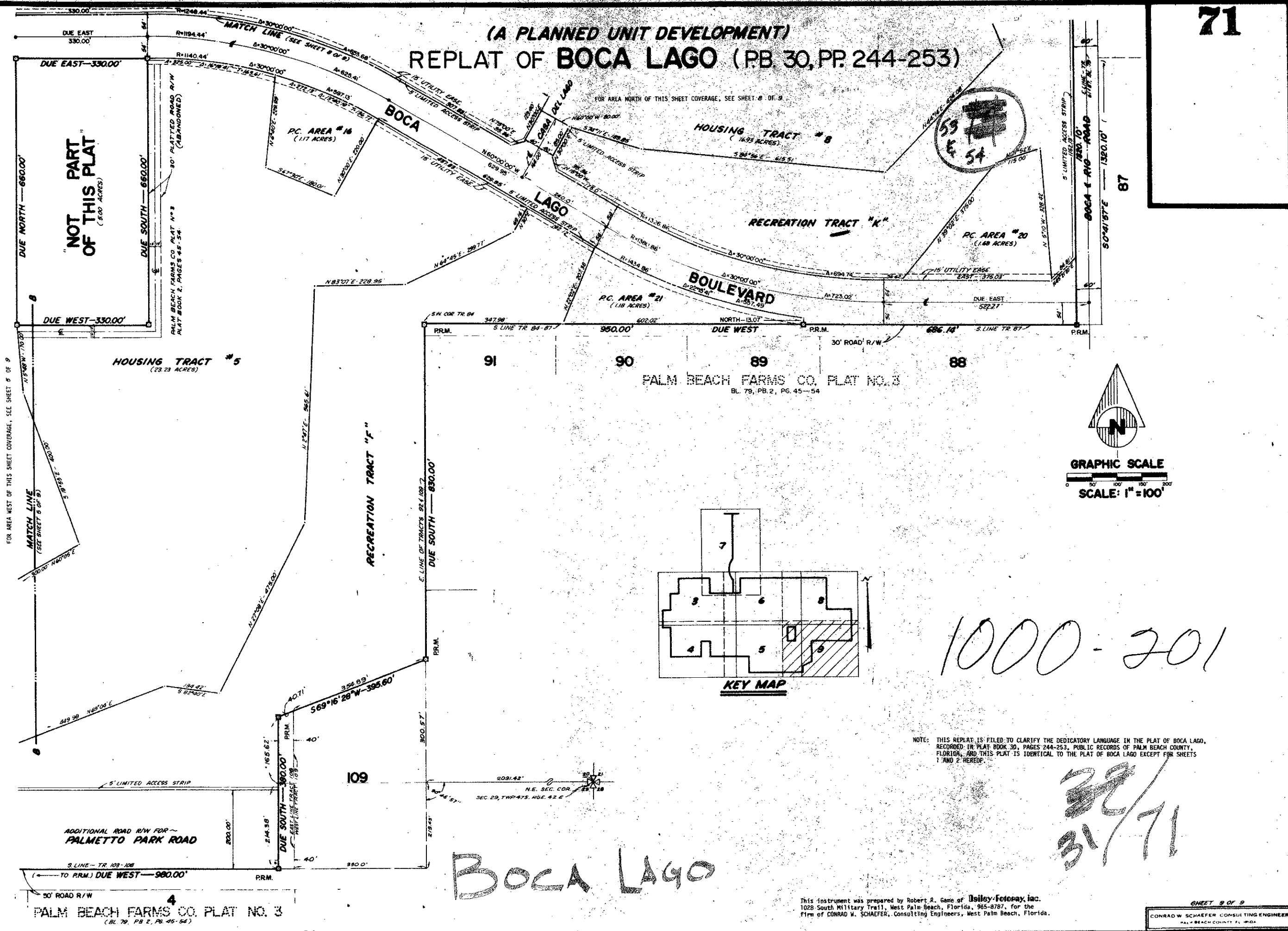


(A PLANNED UNIT DEVELOPMENT)  
REPLAT OF BOCA LAGO (PB 30, PP. 244-253)

31/71



NOT PART OF THIS PLAT (5.00 ACRES)

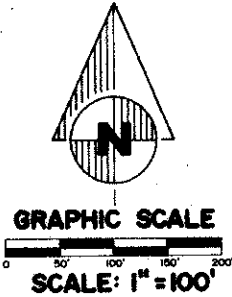
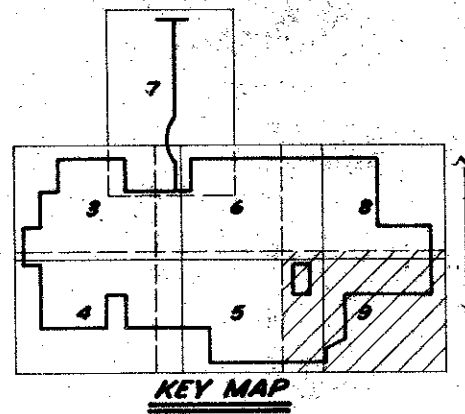
FOR AREA WEST OF THIS SHEET COVERAGE, SEE SHEET 6 OF 9

MATCH LINE (SEE SHEET 5 OF 9)

HOUSING TRACT #5 (23.23 ACRES)

RECREATION TRACT #F

PALM BEACH FARMS CO. PLAT NO. 3  
BL. 79, PB. 2, PG. 45-54



1000-201

NOTE: THIS REPLAT IS FILED TO CLARIFY THE DEDICATORY LANGUAGE IN THE PLAT OF BOCA LAGO, RECORDED IN PLAT BOOK 30, PAGES 244-253, PUBLIC RECORDS OF PALM BEACH COUNTY, FLORIDA, AND THIS PLAT IS IDENTICAL TO THE PLAT OF BOCA LAGO EXCEPT FOR SHEETS 1 AND 2 HEREOF.

31/71

Boca LAGO

PALM BEACH FARMS CO. PLAT NO. 3  
(BL. 79, PB. 2, PG. 45-54)

This instrument was prepared by Robert A. Game of Dooley-Fotomax, Inc., 1028 South Military Trail, West Palm Beach, Florida, 335-8787, for the firm of CONRAD W. SCHAEFER, Consulting Engineers, West Palm Beach, Florida.

SHEET 9 OF 9  
CONRAD W. SCHAEFER CONSULTING ENGINEER  
PALM BEACH COUNTY, FL, U.S.A.